

Plateau Perspectives **ANNUAL REPORT 2010**

REBUILDING YUSHU **AFTER THE EARTHQUAKE**

**AND OTHER
COMMUNITY DEVELOPMENT
AND CONSERVATION PROJECTS
ON THE TIBETAN PLATEAU**





PLATEAU PERSPECTIVES

Community Development & Conservation



Contact information

Plateau Perspectives Canada

c/o Dr Peter Foggin
200 Walnut Avenue
St Lambert, Quebec
J4P 2T1
Canada

Email: info@plateauperspectives.org

Website: www.plateauperspectives.org

Plateau Perspectives Scotland

c/o Prof Alan Torrance
Kincaple House, Kincaple
St Andrews, Fife
KY16 9SH
United Kingdom

All text and photographs © Plateau Perspectives 2011

No reproduction without permission. All rights reserved.

Message from the Director

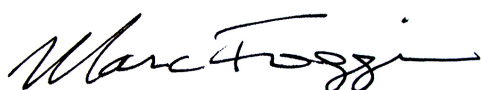
Without doubt, the year 2010 was a year to remember – the year Yushu was devastated by a terrible earthquake that cost thousands of people their lives, and countless more the pain and suffering of lost family and friends. Even now, there are so many physical and emotional injuries that endure. Few of us can truly fathom the difficulties faced by the people of Yushu. Yet at the same time, the response by so many – from monks to military, government workers and shop keepers, young and old persons alike – the pulling together from all backgrounds and walks of life, to work together in this time of need— that was a spectacle to behold, and a real privilege to participate in! Then, following the immediate response, what a rise in innovation, ingenuity and dedication to remake lives as best one can! We wish that the people and communities of Yushu, affected so deeply by the earthquake, may yet recover more fully... and in fact may even find their lives enhanced as the town and region is rebuilt afresh.

Not without connection to the earthquake, the region is undergoing other changes as well – from a refocusing of the economy and local livelihoods on ecotourism, to several wide-reaching development policies, to further refinement of nature reserve (protected area) management initiatives with greater participation by local communities. Plateau Perspectives has been involved in all these matters. In addition, local communities' adoption of a new social-technical approach to mitigate human-wildlife conflict (i.e., solar powered electric fences used to decrease break-ins by brown bears) and the first photograph published of snow leopard in the Sanjiangyuan region also make 2010 a year to remember for Plateau Perspectives and all its partners and friends.

Looking forward to 2011, we anticipate many exciting new developments as well as continuation of important, longer-term community projects and capacity building activities. To all of you who have assisted us in the past, and those who will continue to do so in the future— we extend to you our sincere thanks for all the encouragement and support you have brought us.

May you have an excellent, productive, and joyful 2011! Thank you!

Yours truly,



J Marc Foggin, PhD
Director, Plateau Perspectives

Table of Contents

Plateau Perspectives' <i>Council of Reference</i>	Page 2
 <u><i>Key projects in 2010</i></u>	
Yushu earthquake (at 7:30am on 14 April 2010)	Page 3
Medical training and rehabilitation program	Page 5
Livelihood recovery (including ecotourism)	Page 6
Feasibility study for construction of trail bridges	Page 7
Collaborative management of nature reserves	Page 8
Snow leopard research and conservation	Page 9
Human-wildlife conflict mitigation	Page 11
International study tour to Canada	Page 12
Kegawa Herders Cooperative	Page 13
 <u><i>Administrative matters</i></u>	
Project partners	Page 14
Project field staff	Page 15
Main funders	Page 16

Council of Reference

Professor Calvin DeWitt

Professor of Environmental Studies, University of Wisconsin-Madison

Sir Brian Heap CBE ScD FRS

former Master of St Edmunds College, Cambridge University

Dr John Hodges

former Consultant with UN Food & Agriculture Organization

Sir John Polkinghorne KBE FRS

former President of Queens College, Cambridge University

Sir Ghilleen Prance FRS VMH

former Director of Kew Royal Botanic Gardens, London

Mr Matthias Stiefel

Executive Director, WSP International

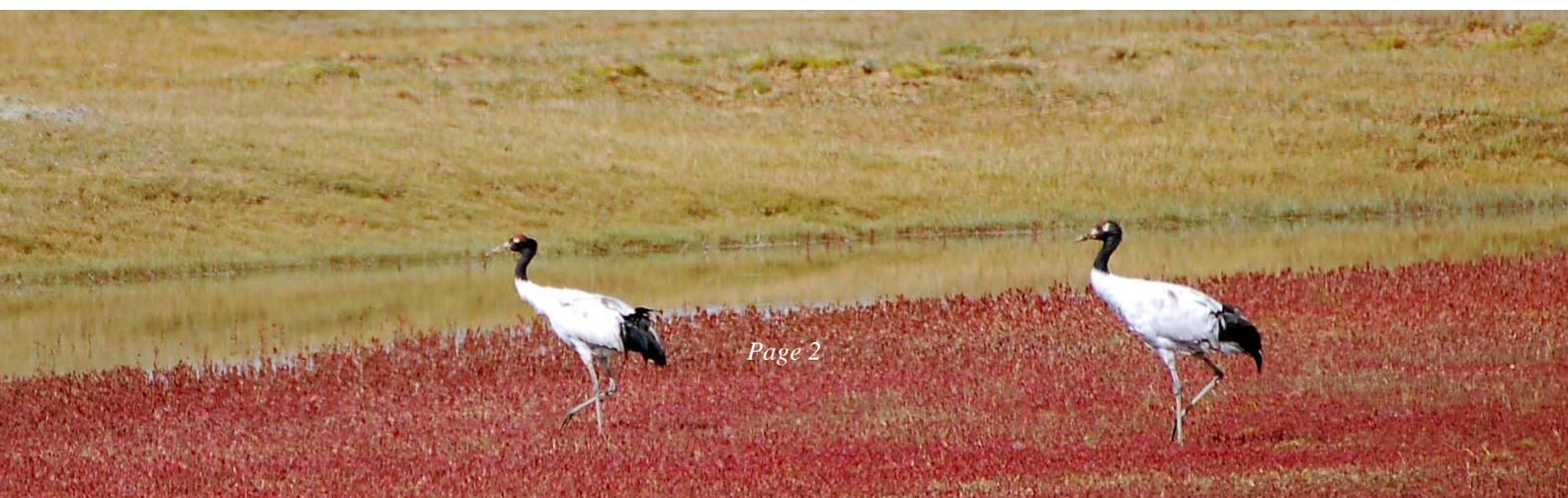
Mr David Taylor

Executive Advisor, Humanitarian Assistance, World Vision International

A very special word of thanks must also go to **Dr Tony Whitten**, who for several years served on Plateau Perspectives' valued *Council of Reference*. His timely words of encouragement, professional advice, suggestions and sound judgement regularly assisted us in our diverse program areas.

Now we are pleased to know Dr Whitten, still as conservation colleague, as he moves from his former role at The World Bank to begin his work as Asia-Pacific Regional Director for the NGO, Fauna & Flora International.

Thank you – and we look forward to continue working together!



Yushu Earthquake

On 14 April 2010, in the early morning, a large 7.1 magnitude earthquake devastated the prefecture capital, Jiegu, and surrounding areas. Thousands of people lost their lives. Many survivors were also left seriously disabled, and emotionally scarred, many without income or surviving care-givers. Nearly all houses came down, and those that didn't were taken down later to rebuild the whole town more safely. This has resulted in most people spending the year in tents, including the cold winter, whereas normally they lived in houses.

Obviously, the earthquake significantly affected our work plans for 2010. As Plateau Perspectives was the only foreign NGO allowed to participate in the immediate emergency response in the first days following the earthquake, we rapidly organized a logistics team in Xining and rotated medical personnel through Yushu. We ran a medical camp for 2 weeks, during which we saw nearly 1,200 patients. However the government then chose to transition medical care over to larger tent-hospitals. We also organized the distribution of relief supplies, from May 2010 to present, including tents, beds, quilts, stoves and fuel, cooking utensils, food, thermals, sweaters, shoes, etc.

In addition we trialled a water purification system, provided training for counselling children who have undergone traumatic experiences, and oversaw and funded patient care for many individuals who required extra attention or treatment in the provincial capital, Xining.

Several articles or news items have been written about the earthquake and our response. These can be accessed at the following addresses:

China's Quake: Avoiding the Political Aftershocks (Time Magazine)

<http://www.time.com/time/world/article/0,8599,1982170,00.html>

In Yushu, NGOs are essential partners (China Global Times)

<http://china.globaltimes.cn/society/2010-06/537192.html>

Canadian Embassy in Beijing [does] its part for Yushu

http://www.canadainternational.gc.ca/china-chine/highlights-faits/highlight-faits_100512_embassyushu.aspx?lang=en

Canadian Changing the World: The Connectors (The Globe and Mail)

<http://www.theglobeandmail.com/news/world/changing-the-world/the-connectors/article1839264/>

China Earthquake (CBC Radio's "As It Happens")

http://www.cbc.ca/radioshows/AS_IT_HAPPENS/20100414.shtml

Plateau Perspectives has prioritized the following two program areas as the main foci for its longer-term response to the Yushu Earthquake:

Rehabilitation Work

The Disabilities Association of Yushu (at prefecture and county levels) has asked us to focus our attention on the development and extension of rehabilitation services in rural areas of the prefecture, particularly through the training of medical and social service staff who will work in the new centres as they are established.

Livelihood Recovery

Helping people rebuild their lives after the earthquake, not least to rebuild (or recreate) their livelihoods, is a second important endeavour. Given the national focus on developing Yushu as a prime 'ecotourism' destination, we have chosen to bring additional effort to raise awareness of and help develop community ecotourism ventures in the region.

At the same time we continue to provide **Emergency Relief**, particularly in light of the cold winter and very difficult living situations of so many people. Altogether, relief supplies have included the following items:

- 50 medium-size tents, 10 large tents
- 100 pressure cookers and utensils
- 400 thermals and socks for children
- 850 solar-powered lights (most from dLight)
- 300 care packages for patients hospitalised in Xining
- 1,000 blankets, jackets, shoes for people in Yushu town
- 1,521 jackets and shoes for school children in Xialaxiu
- 420 jackets, shoes, thermals for children in Xiao Sumang
- 150 wheelchairs and 70 crutches for injured people
- 350 bags of yak dung to elderly care home
- 20 mattresses and blankets for elderly people
- 500 stoves, 1,200 quilts and 5400 sweaters to Haxiu
- 728 jackets donated by Adidas for Yushu relief work
- Medical supplies donated by Baxter Pharmaceuticals
- Clothing donated from FedEx and Sichuan University

Many thanks are due all our donors and supporters, for their generous contributions that have made this response to the earthquake possible.

Medical Training and Rehabilitation Program

Due to the earthquake, we put aside our regular plans for doctor training workshops and focused instead on developing the necessary partnerships to begin rehabilitation work. We now are partnering with Zhiduo County Disabilities Association, which also has oversight for rehabilitation work in Qumalai County. From our new base of operations, we are welcome to visit and assist other disaster-affected areas as well. This work is led by **Dr Marion Torrance-Foggin**. Our special assistance will be given to the new Rehab Centres that will be built in Zhiduo County and in Longbao and Xialaxiu townships of Yushu County.

In December 2010, Plateau Perspectives ran a training course with home visits in Zhiduo County, followed by a rehab-focused medical camp in Longbao Township, Yushu County. In total we assessed about 80 patients, many with follow-up care in Xining.



Livelihood Recovery (including Ecotourism Development)

As part of its response to the Yushu earthquake, Plateau Perspectives has noted the new direction that is being taken for the regional economy of Yushu – namely, to recreate the region as an Ecotourism Destination – and has therefore increased its involvement in this field of work.

Local prefecture government leaders (and others) participated in a study tour that was co-hosted by Parks Canada and Plateau Perspectives to visit mountain national parks and surrounding areas in western Canada with a focus on learning more about natural resource management, community co-management, community tourism, and relevant development issues with indigenous communities. Subsequently, **Mr Gongbu Zhaxi** also had the opportunity to visit the Wemindji Cree co-management protected area project (Quebec) and Dehcho Nation - Nahanni National Park Reserve collaboration (Northwest Territories) as part of his Special Award for Canadian Studies (SACS) study tour grant from the Canadian Embassy.

Later in the year, informed by the above study tours and with valuable contributions made by Mongolian and British colleagues, we also ran the *Yushu International Ecotourism Workshop*, which introduced the concept of community participation, on one hand, and further refined the ideas of sustainability, environmental protection and equitable sharing of benefits with local communities, on the other hand. Development of a new *Yushu Ecotourism Network* was discussed, and most significantly, several local voices were heard for the very first time. Local tourism ventures should now be encouraged and supported where possible, with the broad aim of assisting the development of viable community-run business enterprises.



Feasibility Study for Construction of Trail Bridges

Working with the Yushu prefecture Poverty Alleviation Bureau, a needs assessment and feasibility study were carried out for small rural bridges (trail bridges) in Zaduo County. Many communities could benefit from such local access bridges, and several priority sites were selected. Project staff are already available to implement such work, and new collaboration with the Department of Engineering, Qinghai University, may be possible. Plateau Perspectives' technical advisor, **Mr John Friberg**, has already built (or overseen construction of) many other rural trail bridges across the central Tibetan region and in western Nepal.

The construction of new trail bridges would allow local people not only to have better access to market outlets and social services (primarily for health care and education); but could also be integrated with prefecture plans for tourism development, such as Nepal-style trekking tours with home-stays enroute, along paths previously inaccessible (but opened up with new small bridges).



Collaborative Management of Nature Reserves

Working as real partners with local communities is the best way forward, both as a matter of fairness/justice and in order to achieve sustainability. This principle has been recognized in large part by several of our national partners in Qinghai Province. Plateau Perspectives' collaboration with the Sanjiangyuan National Nature Reserve *and local herding communities* is a good example of some of the progress that has been made over the past several years. Key elements of our joint collaboration carried out in 2010 have included the monitoring and conservation of snow leopard and the trialling of solar-powered electric fences to minimize conflict with brown bear. Plateau Perspectives also had opportunity to share experiences with an African delegation, which sought to learn more about community co-management experiences in the grasslands of southern Qinghai Province.



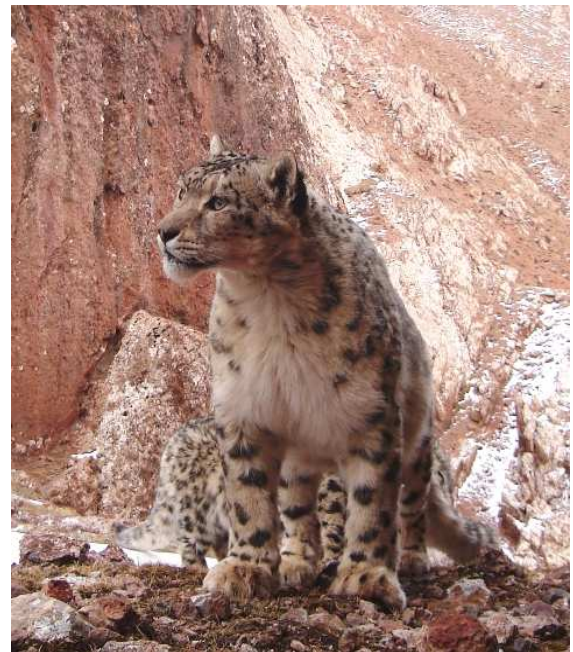
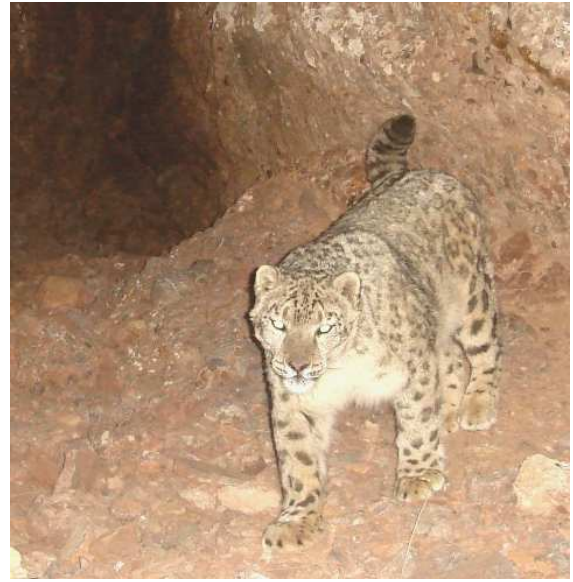
Snow Leopard Research and Conservation

There are estimated to be fewer than 7,000 snow leopard left in the world, surviving only in large, relatively undisturbed wilderness areas of Asia. However, as a ‘flagship’ species highly sensitive to human disturbance, the snow leopard is not only of intrinsic value; its successful preservation also can ensure that vast regions, and a large suite of mountain species, are protected for future generations.

In the Sanjiangyuan region, snow leopard is a focal species around which nature reserve field staff, local communities and Plateau Perspectives are partnering to learn (or further develop abilities in) monitoring techniques, conservation planning, and new approaches of collaborative management.

In the Muqu Mountains, Tibetan herders have been carrying out seasonal transect-monitoring of snow leopard sign for several years, and automatic camera traps have been deployed in 20 different sites over the past year. This work was initiated by Plateau Perspectives, with the Upper Yangtze Organization in the early years (1998-2005) and the Suojia Field Station of the Sanjiangyuan National Nature Reserve since then (2006 to present). The project remains a genuine collaboration: community co-management and conservation of the unique wildlife of Suojia township. Initial results, based on the herders’ visual observations as well as on the photographic evidence, seem to indicate that this mountain area may in fact comprise one of the highest-density populations of snow leopard in Asia. More work is still required, but the conservation value of this part of the Tibetan plateau is undeniable. The opportunity for field training and raising local awareness of conservation matters is equally valuable. In addition, from a societal perspective, partnership with communities (e.g., focused on the co-management of local ecological and wildlife resources) may lead not only to enhanced environmental management but also to a greater sense of project ownership, local pride, and empowerment.





Human-Wildlife Conflict Mitigation

One the greatest costs of conservation in the project area is conflict with brown bear, which now regularly break into herders' winter homes when they move to their summer pastures. For two years, Plateau Perspectives has been trialling the use of solar powered electric fencing as a means to deter bear from such intrusions – and, following the setup and monitoring of nearly 20 units in six different communities, the results are promising. Everywhere in the vicinity of the trial sites, herders are reporting success and asking how they too may acquire similar electric fence sets.

More information about the use of this technology can be found in a short article recently published by Plateau Perspectives staff in *International Bear News*, (<http://www.bearbiology.com/iba/ibn01.html>, February 2010). Plateau Perspectives staff also assisted the EU-China Biodiversity Project to adopt the same approach to conflict mitigation in their work, sourcing and purchasing materials as well as setting up several additional trial sites.



International Study Tour to Canada

In September 2010, Plateau Perspectives led a strategic study tour, co-hosted by Parks Canada, to visit national parks in western Canada. The focus of the study tour was to learn from several models of conservation and community partnership in the Waterton, Banff, Yoho and Pacific Rim national parks and surrounding areas, and to explore several new ideas for income generation such as community ecotourism. We were also received well by Agriculture & Agri-Food Canada (Alberta) and Thompson Rivers University (British Columbia). With their able assistance, we visited with several First Nations, including Blackfoot and Haisla nations, allowing us to gain special insight into current aboriginal development issues as well as to learn more about the real importance of sense of identity, ‘cultural continuity’, etc. With nearly 50 site visits and presentations in less than two weeks, it was a busy but informative and enlightening time for all the participants. We gained many new ideas and observed different ways of operating, pertaining both to resource management and poverty reduction.

A special note of appreciation should also be given to the main sponsors of this study tour, namely HimalPartner, the embassies of Canada and Switzerland in Beijing, and the Ford Foundation. Without their valued assistance, we could not have made such significant headway in 2010 to promote a greater community focus for the development of ecotourism in Yushu (particularly important following the earthquake, in order to assist local people and communities recover or rebuild sustainable livelihoods) or to further encourage adoption, across the Sanjiangyuan region, of more collaborative forms of environmental management and conservation. The new Global Environment Facility (GEF) project currently in development, *Strengthening the Effectiveness of the Protected Area System in Qinghai Province*, is one way that such partnership and collaborative management with local communities could then be trialled more widely, become institutionalized, and adopted and implemented throughout the region.



Kegawa Herders Cooperative

Governance matters. When people ‘own’ their own futures, they devote more time, energy, good will and perseverance to the goals that they set before themselves. In Lari village of Zhiduo County, the community of herders recently organized itself into the *Kegawa Herders Cooperative* – named after a local mountain – following a model of local mobilization and income generation first observed in the South Gobi *aimag* (province) of Mongolia on a study tour co-hosted by People Centred Conservation (PCC Mongolia) and Plateau Perspectives in 2008. Since the Mongolian model was developed, it has been shown empirically that both people and the health of grasslands can benefit from co-management schemes. In Lari village, under the leadership of **Mr Qingmei Randing**, plans are now underway to develop and market ‘ecological’ livestock products for sale, as well as develop several community tourism packages in concert with select regional tour operators. It is expected that these efforts will help generate more income for the community as well as support conservation initiatives and enhance a sense of pride and cultural identity within the community. The Cooperative is already registered with government authorities, and cooperative members and government alike are looking to this new model of community participation as possible way forward to bring sustainable community development to the grasslands.



Project Partners

Disabilities Association of Zhiduo County

Government of Yushu Tibetan Autonomous Prefecture

Sanjiangyuan National Nature Reserve / Qinghai Forest Bureau

Qinghai Normal University

Qinghai University



Project Field Staff

Dr Marc Foggin	Executive Director
Mr Gongbo Tashi	General Manager
Mr Jamie Nofsinger	Projects Manager
Dr Marion Torrance-Foggin	Medical Director
Mr Jigme Rabden	Senior Project Officer, Translator
Mr Yishi Zongbo	Project Officer, Translator
Mr Huting	Xining Office Manager
Ms Ngoya Drolma	Office Accountant, Translator
Mr John Friberg	Technical Advisor (Civil Engineer)
Mr Tim Foster	Technical Advisor (Electrical Eng.)
Ms Xu Haiying	Xining Office Assistant
Mr Neil Duguid	Administrator (Scotland)
Mrs Marjorie Bergen	Treasurer (Canada)

A special thank you must also be extended to **Ben & Shinay Henderson** who served as Planner and Assistant to the Director, and as IT Specialist, respectively. They also provided enormous social support and fun for the whole team – they will be missed! Best of wishes to them both, and their young daughter Liza Ann, as Ben now works as Program Associate at the Blue Moon Foundation.



Credit: Marion Torrance-Foggin

Main Funders in 2010

Earthquake Relief

Adidas	Embassy of Canada
Alpha Communities	Embassy of Denmark
AmeriCares	Embassy of Switzerland
Baxter	FedEx
BICF Impact	Giving Hand
China Heart International	IDEAS
ChinServe	Jianhua Foundation
dLight International	Kunde Foundation
Eldorado Gold	Sichuan University
ELCA	and over 300 private donors

Conservation and Sustainable Development Projects

Barbour Trust	Community health
Embassy of Canada	International study tour
Embassy of New Zealand	Construction of village clinic
Ford Foundation	Leadership development, empowerment
HimalPartner	<i>Yushu Integrated Development Project</i>
World Concern	Construction of rural trail bridges

Other Sponsors

CACPRO	Website design (in progress)
CanadaHelps	Secure online donations
eBay / MissionFish	Support for fund-raising
SafeSecureHost	Website and email hosting

Income and Expenses in 2010

Regular project income	approx. \$ 210,000 CAD (£ 130,000 GBP)
Regular project expenses	approx. \$ 150,000 CAD (£ 95,000 GBP)
Earthquake Relief income	over \$ 250,000 CAD (£ 155,000 GBP)
Earthquake Relief expenses	approx. \$ 200,000 CAD (£ 125,000 GBP)



Canadian charity no. 88353 511 RR0001

Canadian BN # 83622 7678 RC0001

Scottish charity no. SC036202

China BN # 78144734-9

www.plateauperspectives.org

Text and photographs: J Marc Foggin